

BOX SCORE: *** FINAL ***

Date: 03-24-88 Site: State Tourney, Frankfort Attendance: 3,850

Team: George Rogers Clark

NO.	NAME	TOTAL FG		3-POINT		FT	FTA	REB			PF	TP	A	TO	BLK	S	MIN
		FG	FGA	FG	FGA			O	D	T							
23	Quisenberry, K.	1 / 4	0 / 0	0 / 0	0	0	1	4	5	2	2	2	6	0	0	30	
35	Wells, Tracy	0 / 0	0 / 0	0 / 0	0	0	0	1	1	1	0	2	0	0	10		
24	Berryman, Jen.	12 / 16	0 / 0	0 / 0	2	2	4	9	13	5	26	2	3	2	2	25	
11	Phillips, Jessie	2 / 3	0 / 0	0 / 0	2	5	2	7	9	1	6	1	0	0	0	29	
34	Cline, Shannon	2 / 8	1 / 3	0 / 0	0	1	0	1	1	3	5	4	4	0	2	20	
42	Oliver, Heather	1 / 3	0 / 0	0 / 0	2	2	0	0	0	0	4	2	1	0	0	11	
30	Robinson, Lea	3 / 7	0 / 0	0 / 0	1	6	2	5	7	2	7	1	3	1	1	17	
32	Thomas, Maisha	2 / 2	0 / 0	0 / 0	2	3	0	3	3	1	6	0	2	1	2	17	
33	Rainey, Alicia	0 / 0	0 / 0	0 / 0	0	0	0	0	0	0	0	0	0	0	0	1	
TEAM																	
TOTALS		23 / 43	1 / 3	0 / 0	9	19	9	32	41	15	56	14	19	4	7	160	

Percentages:	Game	FG	23/ 43	53.5%	3-PT.	1/ 3	33.3%	FT	9/ 19	47.4%
	Period 1	7/ 11	63.6%	0/ 0	0.0%	2/ 2	100.0%			
	Period 2	8/ 13	61.5%	1/ 2	50.0%	0/ 1	0.0%			
	Period 3	4/ 7	57.1%	0/ 0	0.0%	1/ 2	50.0%			
	Period 4	4/ 12	33.3%	0/ 1	0.0%	6/ 14	42.9%			

Team: West Carter

NO.	NAME	TOTAL FG		3-POINT		FT	FTA	REB			PF	TP	A	TO	BLK	S	MIN
		FG	FGA	FG	FGA			O	D	T							
44	English, Brenda	3 / 14	0 / 0	0 / 0	3	6	2	6	8	5	9	2	2	0	4	32	
45	Taylor, Gina	1 / 5	0 / 0	0 / 0	2	2	0	2	2	1	4	0	1	0	1	18	
40	Porter, Sheila	2 / 9	0 / 0	0 / 0	2	4	4	6	10	4	6	0	3	0	0	32	
35	Greenhill, Mel.	1 / 4	1 / 2	0 / 0	0	0	0	1	1	4	3	2	1	0	2	27	
41	Brown, Kim	7 / 15	7 / 14	0 / 0	2	4	0	2	2	4	23	1	4	0	1	32	
34	McDowell, Karla	0 / 0	0 / 0	0 / 0	0	1	0	0	0	0	0	0	0	0	0	5	
50	Layne, Samantha	0 / 2	0 / 1	0 / 0	0	0	1	0	1	0	0	0	0	0	0	6	
33	Barker, Carolee	1 / 3	0 / 1	0 / 0	0	0	1	2	3	2	2	0	1	0	0	8	
TEAM																	
TOTALS		15 / 52	8 / 18	0 / 0	9	17	11	19	30	20	47	5	12	0	8	160	

Percentages:	Game	FG	15/ 52	28.8%	3-PT.	8/ 18	44.4%	FT	9/ 17	52.9%
	Period 1	2/ 12	16.7%	0/ 0	0.0%	4/ 5	80.0%			
	Period 2	3/ 13	23.1%	1/ 4	25.0%	0/ 2	0.0%			
	Period 3	5/ 13	38.5%	3/ 6	50.0%	3/ 4	75.0%			
	Period 4	5/ 14	35.7%	4/ 8	50.0%	2/ 6	33.3%			

OFFICIALS: Dan Hatfield, Gary Gaddie, Alt.-P. Tucker

Technical: None

SCORE BY PERIODS

George Rogers Clark	16	17	9	14	=	56
West Carter	8	7	16	16	=	47

Produced by the K.H.S.A.A. Stat Crew with FINL III**

George Rogers Clark "Lady Cardinals" vs West Carter "Lady Comets"
2nd Half Play by Play

Tip off at 9:00 p.m. on 03/24/88 at State Tourney, Frankfort
Produced by the K.H.S.A.A. Stat Crew with FINAL IIII**

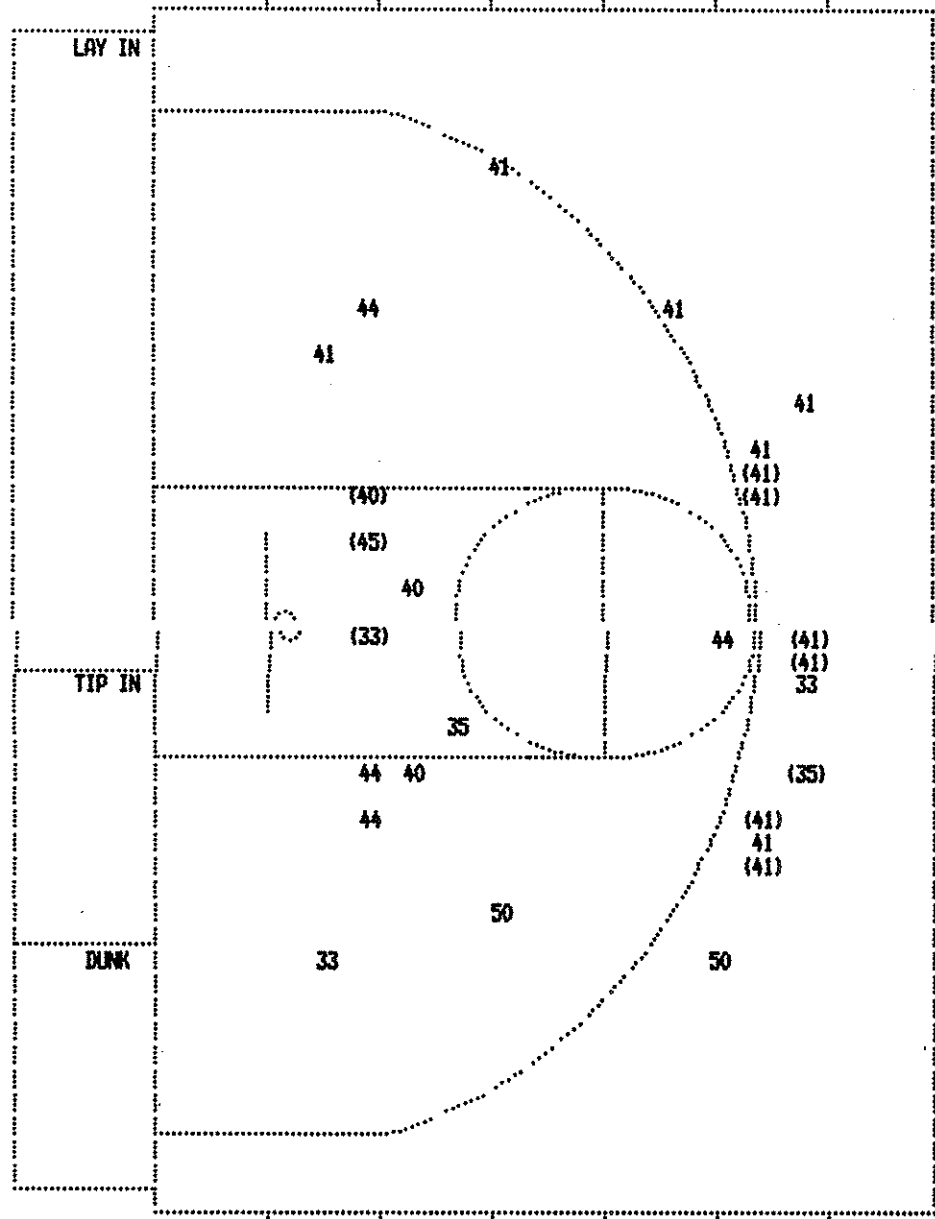
PAGE : 1

Player	Team	West Carter	Time	Score	George Rogers Clark	Player	Team
English, Brenda, Taylor, Gina, Porter, Sheila, Greenhill, Mel., Brown, Kim					Quisenberry, K., Wells, Tracy, Berryman, Jen., Phillips, Jessie, Cline, Shannon		
			3 7:46	15-35*	4 ft Lane Bank by Berryman, Jen. Assist by Quisenberry, K.	9-10	90.0% 16-25 64.0%
			3 7:25		Foul on Wells, Tracy	1	11
2-2	100% 6-9	66.6% Taylor, Gina, 2 Free Throws made both	3 7:25	*17-35		1	1
	3	1 Foul on English, Brenda	3 7:19				
1-5	20.0% 6-26	23.0% 4 ft Lane Jump shot by Taylor, Gina	3 6:35	*19-35			
			3 5:22	19-37*	16 ft Circle Jump shot by Phillips, Jessie	2-3	66.6% 17-27 62.9%
2-7	28.5% 7-30	23.3% 6 ft Lane Bank by Porter, Sheila	3 5:02		Sub In: Robinson, Lea Out: Wells, Tracy		
	1	2 Assist by Brown, Kim	3 5:02	*21-37			
			3 4:37	21-39*	2 ft Lane Follow by Berryman, Jen.	10-11	90.9% 18-29 62.0%
			3 4:23		Foul on Berryman, Jen.	3	2
			3 4:21				
1-3	33.3% 7-11	63.6% English, Brenda, 2 Free Throws made 1st missed 2nd	3 4:21	*22-39			
	1	2 Foul on Brown, Kim	3 3:59		Sub In: Thomas, Maisha Out: Berryman, Jen.		
			3 3:59	22-40*	Robinson, Lea, 2 Free Throws made 1st missed 2nd	1-3	33.3% 3-5 50.0%
			3 3:24		Player Control Foul on Quisenberry, K.	2	3
1-3	33.3% 8-32	25.0% 3 pt 23 ft Left Angle Jump shot by Greenhill, Mel.	3 2:52	*25-40			
	2	3 Foul on Greenhill, Mel.	3 2:41				
2-6	33.3% 9-33	27.2% 3 pt 22 ft Straight Away Jump shot by Brown, Kim	3 2:21	*28-40			
	2	3 Assist by Greenhill, Mel.					
			3 1:51				
		REB: 19 A: 3 BLK: 0 TD: 8 PF: 3			George Rogers Clark No. 1	REB: 23 A: 11 BLK: 4 TD: 14 PF: 3	
		S: 6 FT: 7-11 63.6% FG: 9-35 25.7%				S: 5 FT: 3-5 60.0% FG: 18-30 60.0%	
			3 1:15		Sub In: Berryman, Jen. Out: Robinson, Lea		
			3 1:15	*31-40			
3-7	42.8% 10-37	27.0% 3 pt 22 ft Straight Away Jump shot by Brown, Kim	3 0:11	31-42*	Driving Layup by Thomas, Maisha	1-1	100% 19-31 61.2%
	1	4 Assist by English, Brenda			Assist by Quisenberry, K.	2	12

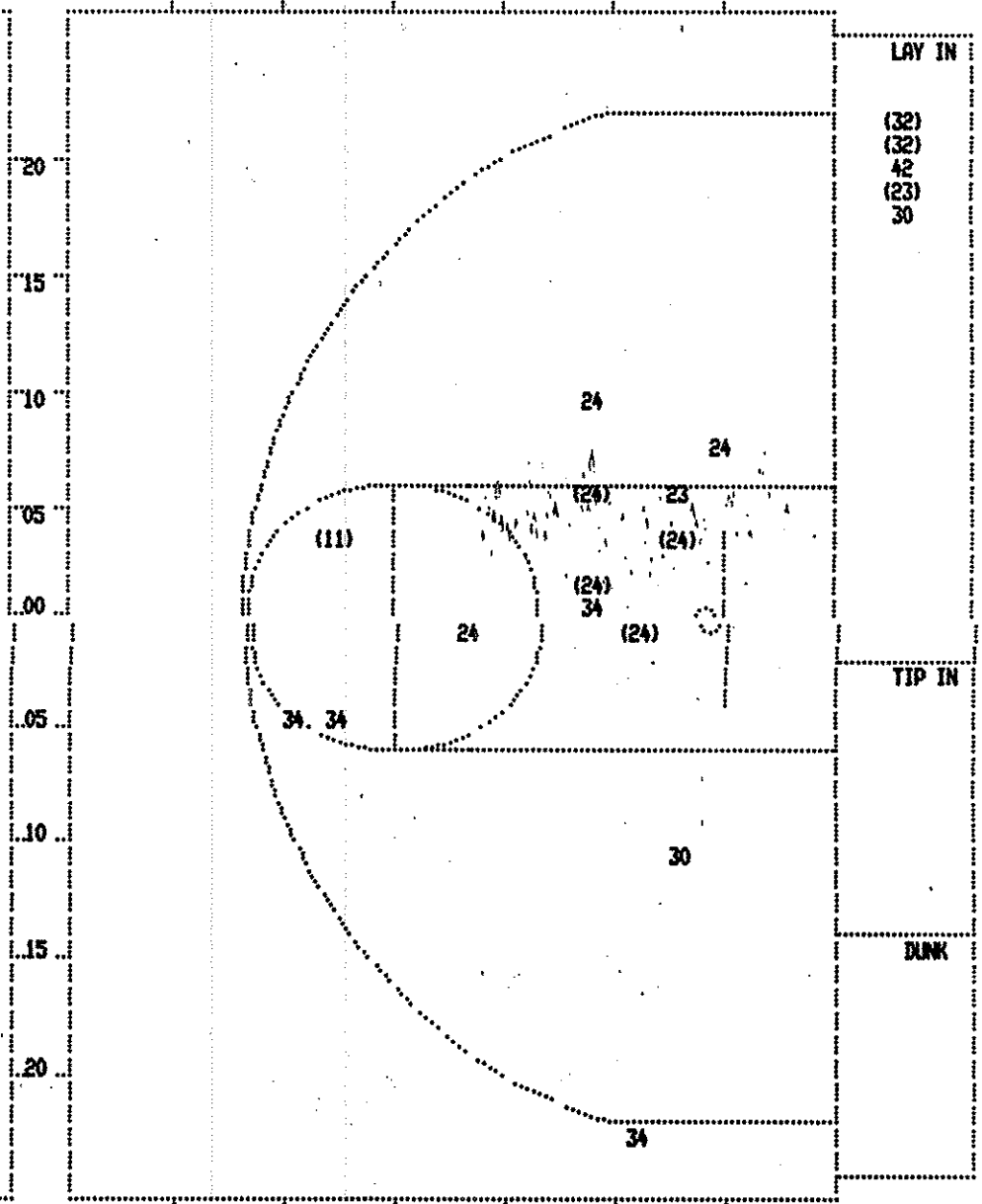
Player	Team	West Carter	Time	Score	George Rogers Clark	Player	Team
McDowell, Karl, Brown, Kim, English, Brenda, Barker, Carolee, Porter, Sheila Berryman, Jen., Guisenberry, K., Cline, Shannon, Phillips, Jessie, Thomas, Maisha							
4	4	Foul on English, Brenda	4 7:29		Ball to Lady Cardinals		
			4 6:50	31-44*	Driving Layup by Thomas, Maisha Assist by Berryman, Jen.	2-2	100% 20-34 58.8% 2 13
		REB: 20 A: 4 BLK: 0 TO: 9 PF: 4 S: 6 FT: 7-11 63.6% FG: 10-39 25.6%	4 5:54		REB: 28 A: 13 BLK: 4 TO: 15 PF: 3 S: 6 FT: 3-5 60.0% FG: 20-35 57.1%		
		Sub In: Greenhill, Mel. Out: McDowell, Karl	4 5:53				
4-8	50.0%	11-42 26.1%	3 pt 22 ft Left Angle Jump shot by Brown, Kim	4 5:27 31-46*	4 ft Lane Follow by Berryman, Jen.	11-15	73.3% 21-37 56.7%
			4 4:42 *34-45				
			4 4:18		Foul on Cline, Shannon	2	4
			4 4:18		Sub In: Oliver, Heather Out: Cline, Shannon		
		Sub In: McDowell, Karl Out: Greenhill, Mel.	4 4:18				
		REB: 21 A: 4 BLK: 0 TO: 10 PF: 4 S: 7 FT: 7-11 63.6% FG: 11-42 26.1%	4 4:05		REB: 31 A: 13 BLK: 4 TO: 16 PF: 4 S: 6 FT: 3-5 60.0% FG: 21-39 53.8%		
		No. 1 West Carter			TIME - OUT		
2	5	Foul on Brown, Kim	4 4:03				
			4 4:01 34-48*		Thomas, Maisha, 2 Free Throws made both	2-2	100% 5-7 71.4%
5-10	50.0%	12-44 27.2%	3 pt 21 ft Circle Jump shot by Brown, Kim	4 3:37 34-50*	7 ft Left Side Jump shot by Berryman, Jen.	12-16	75.0% 22-40 55.0%
			4 3:23 *37-50				
			4 2:58		Foul on Berryman, Jen.	4	5
		Sub In: Greenhill, Mel. Out: McDowell, Karl	4 2:58				
		REB: 21 A: 4 BLK: 0 TO: 10 PF: 5 S: 7 FT: 7-11 63.6% FG: 12-44 27.2%	4 2:58		REB: 32 A: 13 BLK: 4 TO: 17 PF: 5 S: 6 FT: 5-7 71.4% FG: 22-40 55.0%		
		No. 2 West Carter			TIME - OUT		
0-1	00.0%	7-12 58.3%	McDowell, Karl, 1 & Bonus missed 1st	4 2:58			
				4 2:58	Rebound by Thomas, Maisha	D-1	Tot-1 D-1 Tot-33
				4 2:57	Bad Pass by Oliver, Heather	1	18
6-11	54.5%	13-45 28.8%	3 pt 22 ft Right Angle Jump shot by Brown, Kim, made	4 2:45 *40-50			
2	5	Assist by English, Brenda	4 2:34		Layup Off Fast Break by Oliver, Heather, missed	1-3	33.3% 22-41 53.6%
D-1	Tot-1	D-1 Tot-22	Rebound by Porter, Sheila	4 2:33			
				4 2:28	Steal by Thomas, Maisha	1	7
3	11	Dribbling Error on Porter, Sheila	4 2:26				
3	6	Foul on Greenhill, Mel.	4 2:18				
1	12	Free Throw Lane Violation on Barker, Carolee	4 2:15				
D-1	Tot-1	D-2 Tot-23	Rebound by Brown, Kim	4 2:15	Thomas, Maisha, 1 & Bonus missed 1st	2-3	66.6% 5-8 62.5%
7-12	58.3%	14-46 30.4%	3 pt 22 ft Left Angle Hook by Brown, Kim, made	4 2:06 *43-50			
1	8	Steal by English, Brenda	4 2:00				
			4 1:59		Bad Pass by Berryman, Jen.	3	19
			4 1:59		Foul on Berryman, Jen.	5	6
			4 1:59		Sub In: Robinson, Lea Out: Berryman, Jen.		
1-4	25.0%	7-13 53.8%	English, Brenda, 1 & Bonus missed 1st	4 1:59			
				4 1:57	Rebound by Robinson, Lea	D-1	Tot-1 D-2 Tot-34
				4 1:57			
D-2	Tot-2	D-3 Tot-24	Rebound by Porter, Sheila	4 1:57	Robinson, Lea, 1 & Bonus missed 1st	1-4	25.0% 5-9 55.5%
7-13	53.8%	14-47 29.7%	3 pt 21 ft Right Angle Jump shot by Brown, Kim, missed	4 1:49			
				4 1:47	Rebound by Thomas, Maisha	D-2	Tot-2 D-3 Tot-35
				4 1:41			
D-3	Tot-3	D-4 Tot-25	Rebound by Porter, Sheila	4 1:41	Phillips, Jessie, 1 & Bonus missed 1st	0-1	00.0% 5-10 50.0%
				4 1:40			
2-4	50.0%	7-14 50.0%	Porter, Sheila, 1 & Bonus missed 1st	4 1:40	Foul on Robinson, Lea	1	7
				4 1:40			

Player	Team	West Carter	Time	Score	George Rogers Clark	Player	Team
3	9	Foul on Porter, Sheila	4 1:38		Rebound by Phillips, Jessie	D-1 Tot-1	D-4 Tot-36
			4 1:34				
			4 1:34		Phillips, Jessie, 1 & Bonus missed 1st	0-2	00.0% 5-11 45.4%
			4 1:32		Rebound by Phillips, Jessie	0-1 Tot-2	0-1 Tot-37
4	10	Foul on Brown, Kim	4 1:29				
			4 1:29	43-52*	Oliver, Heather, 1 & Bonus made both	2-2	100% 7-13 53.8%
0-2	00.0%	14-48 29.1%	3 pt 22 ft Straight Away Jump shot by				
			Barker, Carolee, missed				
0-1 Tot-4	0-1 Tot-26	Rebound by Porter, Sheila	4 1:15				
2-9 22.2%	14-49 28.5%	4 ft Lane Follow by Porter, Sheila, missed	4 1:13				
0-1 Tot-1	0-2 Tot-27	Rebound by Barker, Carolee	4 1:13				
1-3 33.3%	15-50 30.0%	2 ft Lane Follow by Barker, Carolee, made	4 1:10				
			4 1:10	*45-52			
		REB: 27 A: 5 BLK: 0 TO: 12 PF: 10	4 1:06				
		S: 8 FT: 7-14 50.0% FG: 15-50 30.0%					
		No. 3 West Carter	T I M E - O U T				
					REB: 37 A: 13 BLK: 4 TO: 19 PF: 7		
					S: 7 FT: 7-13 53.8% FG: 22-41 53.6%		
4	11	Foul on Greenhill, Mel.	4 1:06		Sub In: Cline, Shannon Out: Oliver, Heather		
			4 0:56				
D-1 Tot-1	D-5 Tot-28	Rebound by Greenhill, Mel.	4 0:56		Cline, Shannon, 1 & Bonus missed 1st	0-1	00.0% 7-14 50.0%
			4 0:56				
3-6 50.0%	9-16 56.2%	English, Brenda, 1 & Bonus made both	4 0:50		Foul on Robinson, Lea	2	8
			4 0:50	*47-52			
			4 0:45	47-54*	Layup Off Fast Break by Guisenberry, K., made	1-4	25.0% 23-42 54.7%
					Assist by Cline, Shannon	4	14
					Foul on Cline, Shannon	3	9
2-4 50.0%	9-17 52.9%	Brown, Kim, 1 & Bonus missed 1st	4 0:35				
			4 0:35				
			4 0:33		Rebound by Guisenberry, K.	D-1 Tot-1	D-5 Tot-38
			4 0:27		Driving Layup by Robinson, Lea, missed	3-7	42.8% 23-43 53.4%
			4 0:26		Rebound by Robinson, Lea	0-1 Tot-2	0-2 Tot-39
			4 0:26				
			4 0:26		Robinson, Lea, 2 Free Throws missed both	1-6	16.6% 7-16 43.7%
			4 0:25				
D-1 Tot-2	D-6 Tot-29	Rebound by Barker, Carolee	4 0:17				
7-14 50.0%	15-51 29.4%	3 pt 24 ft Right Angle Jump shot by	4 0:17		Rebound by TEAM	D-1 Tot-1	D-6 Tot-40
		Brown, Kim, missed	4 0:15				
			4 0:15				
2	13	Foul on Barker, Carolee	4 0:15		47-56* Phillips, Jessie, 1 & Bonus made both	2-4	50.0% 9-18 50.0%
		Sub In: McDowell, Karl Out: Greenhill, Mel.	4 0:15				
			4 0:15				
7-15 46.6%	15-52 28.8%	12 ft Right Base Line Jump shot by	4 0:08				
		Brown, Kim, missed	4 0:07		Rebound by Phillips, Jessie	D-2 Tot-3	D-7 Tot-41
			4 0:04				
			4 0:04		Sub In: Rainey, Alicia Out: Cline, Shannon		
			4 0:04		Phillips, Jessie, 1 & Bonus missed 1st	2-5	40.0% 9-19 47.3%
D-2 Tot-3	D-7 Tot-30	Rebound by Barker, Carolee	4 0:04				

SECOND HALF SHOT CHART Produced by the K.H.S.A.A. Stat Crew with FINAL III™



West Carter					
Player		Player		Player	
44 - English, B	0 / 4	0.0%	33 - Barker, Ca	1 / 3	33.3%
45 - Taylor, Gi	1 / 1	100.0%	50 - Layne, Sam	0 / 2	0.0%
40 - Porter, Sh	1 / 3	33.3%			
35 - Greenhill,	1 / 2	50.0%			
41 - Brown, Kim	6 / 12	50.0%			
Layups	1-9 Ft	10-15 Ft	Over 15 Ft	3 Pointers	Total
	3 / 8	0 / 4	0 / 1	7 / 14	10 / 27
	37.5%	0.0%	0.0%	50.0%	37.0%



George Rogers Clark					
Player		Player		Player	
23 - Quisenbarr	1 / 2	50.0%	32 - Thomas, Ma	2 / 2	100.0%
24 - Berryman,	4 / 7	57.1%	42 - Oliver, He	0 / 1	0.0%
11 - Phillips, J	1 / 1	100.0%			
34 - Cline, Sha	0 / 4	0.0%			
30 - Robinson,	0 / 2	0.0%			
Layups	1-9 Ft	10-15 Ft	Over 15 Ft	3 Pointers	Total
	3 / 5	4 / 7	0 / 3	1 / 3	0 / 1
	60.0%	57.1%	0.0%	33.3%	0.0%
					8 / 19
					42.1%

BOX SCORE: * OFFICIAL FIRST HALF * Date: 03-24-88 Site: State Tourney, Frankfort Attendance:

Team: George Rogers Clark

NO.	NAME	TOTAL FG		3-POINT		FT	FTA	REB			PF	TP	A	TO	BLK	S	MIN
		FG	FGA	FG	FGA			O	D	T							
23	Quisenberry, K.	0	2	0	0	0	0	0	1	1	1	0	0	2	0	0	14
35	Wells, Tracy	0	0	0	0	0	0	0	1	1	0	0	2	0	0	0	7
24	Berryman, Jen.	8	9	0	0	2	2	2	7	9	2	18	1	1	1	2	14
11	Phillips, Jessie	1	2	0	0	0	0	0	2	2	1	2	1	0	0	0	13
34	Cline, Shannon	2	4	1	2	0	0	0	0	0	1	5	3	3	0	1	8
42	Oliver, Heather	1	2	0	0	0	0	0	0	0	0	2	2	0	0	0	7
30	Robinson, Lea	3	5	0	0	0	1	1	3	4	0	6	1	3	1	1	11
32	Thomas, Maisha	0	0	0	0	0	0	0	1	1	1	0	0	1	1	0	6
TEAM								1	1								
TOTALS		15	24	1	2	2	3	3	16	19	6	33	10	10	3	4	80

Percentages: HALF----- FG 15/ 24 62.5% 3-PT. 1/ 2 50.0% FT 2/ 3 66.7%
 Period 1 7/ 11 63.6% 0/ 0 0.0% 2/ 2 100.0%
 Period 2 8/ 13 61.5% 1/ 2 50.0% 0/ 1 0.0%

Team: West Carter

NO.	NAME	TOTAL FG		3-POINT		FT	FTA	REB			PF	TP	A	TO	BLK	S	MIN
		FG	FGA	FG	FGA			O	D	T							
44	English, Brenda	3	10	0	0	0	1	1	4	5	2	6	0	1	0	1	16
45	Taylor, Gina	0	4	0	0	0	0	0	2	2	1	0	0	1	0	1	15
40	Porter, Sheila	1	6	0	0	2	3	2	1	3	2	4	0	2	0	0	16
35	Greenhill, Mel.	0	2	0	1	0	0	0	0	0	1	0	1	1	0	2	15
41	Brown, Kim	1	3	1	3	2	3	0	0	0	0	5	0	2	0	1	16
34	McDowell, Karla	0	0	0	0	0	0	0	0	0	0	0	0	0	0	0	1
50	Layne, Samantha	0	0	0	0	0	0	0	0	0	0	0	0	0	0	0	1
TEAM								2	2								
TOTALS		5	25	1	4	4	7	5	7	12	6	15	1	7	0	5	80

Percentages: HALF----- FG 5/ 25 20.0% 3-PT. 1/ 4 25.0% FT 4/ 7 57.1%
 Period 1 2/ 12 16.7% 0/ 0 0.0% 4/ 5 80.0%
 Period 2 3/ 13 23.1% 1/ 4 25.0% 0/ 2 0.0%

OFFICIALS: Dan Hatfield, Gary Gaddie, Alt.-P. Tucker
 Technicals: None
 SCORE BY PERIODS
 George Rogers Clark 16 17 = 33
 West Carter 8 7 = 15

George Rogers Clark "Lady Cardinals" vs West Carter "Lady Comets"
1st Half Play by Play

PAGE : 2

Tip off at 9:00 p.m. on 03/24/88 at State Tourney, Frankfort
Produced by the K.H.S.A.A. Stat Crew with FINAL III™

Player	Team	West Carter	Time	Score	George Rogers Clark	Player	Team
English, Brenda, Taylor, Gina, Porter, Sheila, Greenhill, Mel., Brown, Kim					Thomas, Maisha, Cline, Shannon, Quisenberry, K., Wells, Tracy, Robinson, Lea Ball to Lady Cardinals		
2-7	28.5%	3-13	23.0%	Driving Layup by English, Brenda	2 7:19 *10-16		
1-1	100%	4-14	28.5%	3 pt 22 ft Left Base Line Jump shot by Brown, Kim	2 6:58 2 6:31 *13-16 2 6:14 13-19*		
					3 pt 22 ft Left Base Line Jump shot by Cline, Shannon Assist by Robinson, Lea	1-2	50.0% 8-13 61.5% 1 6
1		2		Foul on Porter, Sheila	2 5:48 2 5:47 2 5:47 13-21*		
					Sub In: Phillips, Jessie Out: Thomas, Maisha 14 ft Lane Jump shot by Berryman, Jen. Assist by Phillips, Jessie	7-8	87.5% 9-14 64.2% 1 7
1		3		Foul on English, Brenda	2 5:13 2 4:07 2 3:29 2 3:29		
					Sub In: Wells, Tracy Out: Robinson, Lea Foul on Phillips, Jessie	1	5
0-1	00.0%	4-6	66.6%	English, Brenda, 1 & Bonus missed 1st	2 3:20 13-23*		
					14 ft Lane Jump shot by Berryman, Jen. Assist by Cline, Shannon	8-9	88.8% 10-18 55.5% 2 8 1 6
2-3	66.6%	4-7	57.1%	Brown, Kim, 1 & Bonus missed 1st	2 3:04 2 3:04 2 3:04 2 2:58 2 2:58		
1		4		Foul on Greenhill, Mel.	2 2:58 2 2:58 13-25* 2 2:19 13-27*		
					Sub In: Robinson, Lea Out: Quisenberry, K. Sub In: Thomas, Maisha Out: Wells, Tracy 2 ft Lane Driving by Phillips, Jessie Layup Off Fast Break by Cline, Shannon Assist by Berryman, Jen.	1-1	100% 11-19 57.8% 2-4 50.0% 12-20 60.0% 1 9
					Layup Off Fast Break by Robinson, Lea Assist by Cline, Shannon	1-3	33.3% 13-21 61.9% 3 10
2		5		Foul on Porter, Sheila	2 1:36 13-29*		
					Layup Off Fast Break by Robinson, Lea Assist by Cline, Shannon	0-1	00.0% 2-3 66.6%
2		6		Foul on English, Brenda	2 1:35 2 1:35 2 1:07 2 1:06		
					Robinson, Lea, 1 Free Throw missed Subs In: Oliver, Heather, Quisenberry, K. Out: Berryman, Jen., Cline, Shannon		
					Subs In: McDowell, Karl, Layne, Samantha Out: Greenhill, Mel., Taylor, Gina		
3-10	30.0%	5-24	20.8%	6 ft Lane Turnaround by English, Brenda	2 1:06 2 1:03 *15-29 2 0:34 15-31* 2 0:07 15-33*		
					6 ft Lane Bank by Robinson, Lea 4 ft Lane Follow by Robinson, Lea	2-4	50.0% 14-22 63.6% 3-5 60.0% 15-24 62.5%

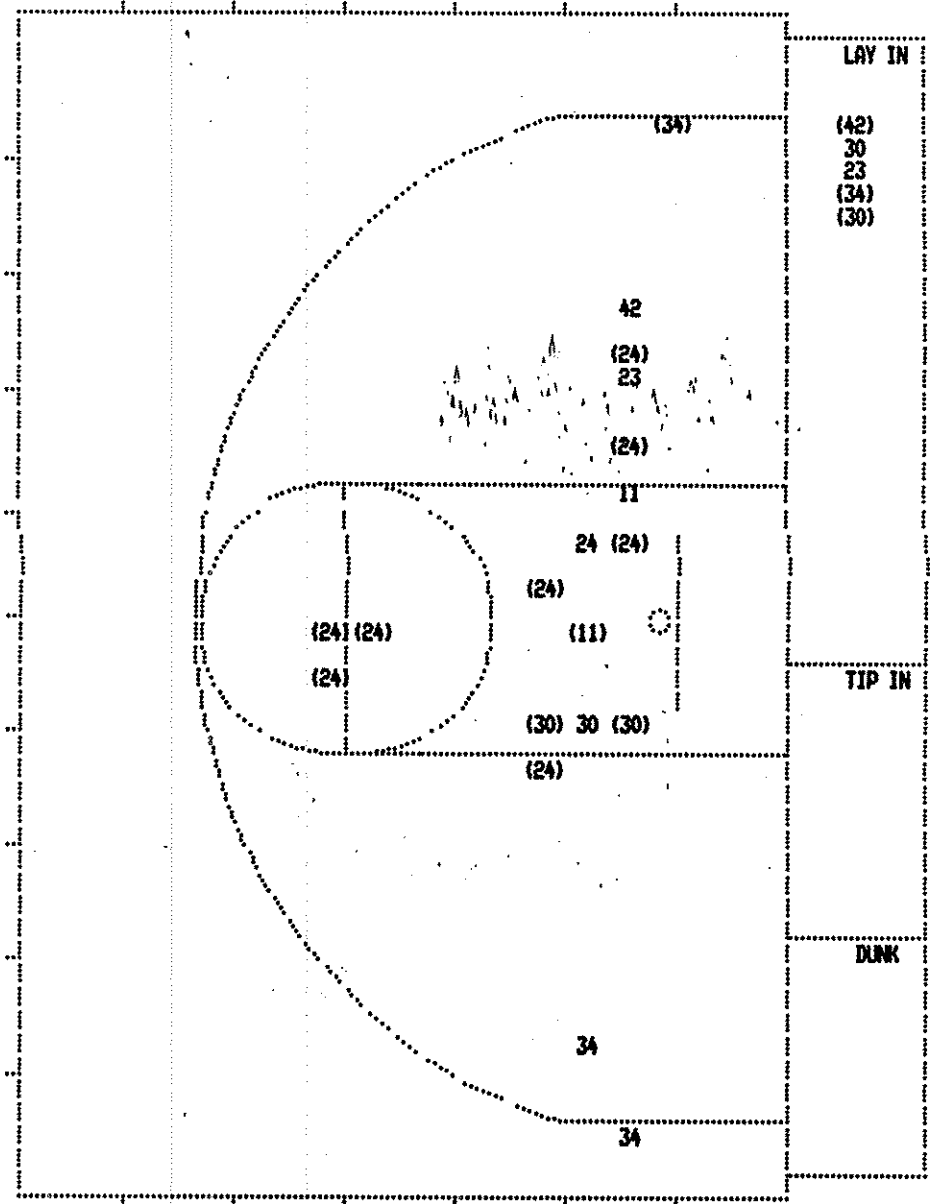
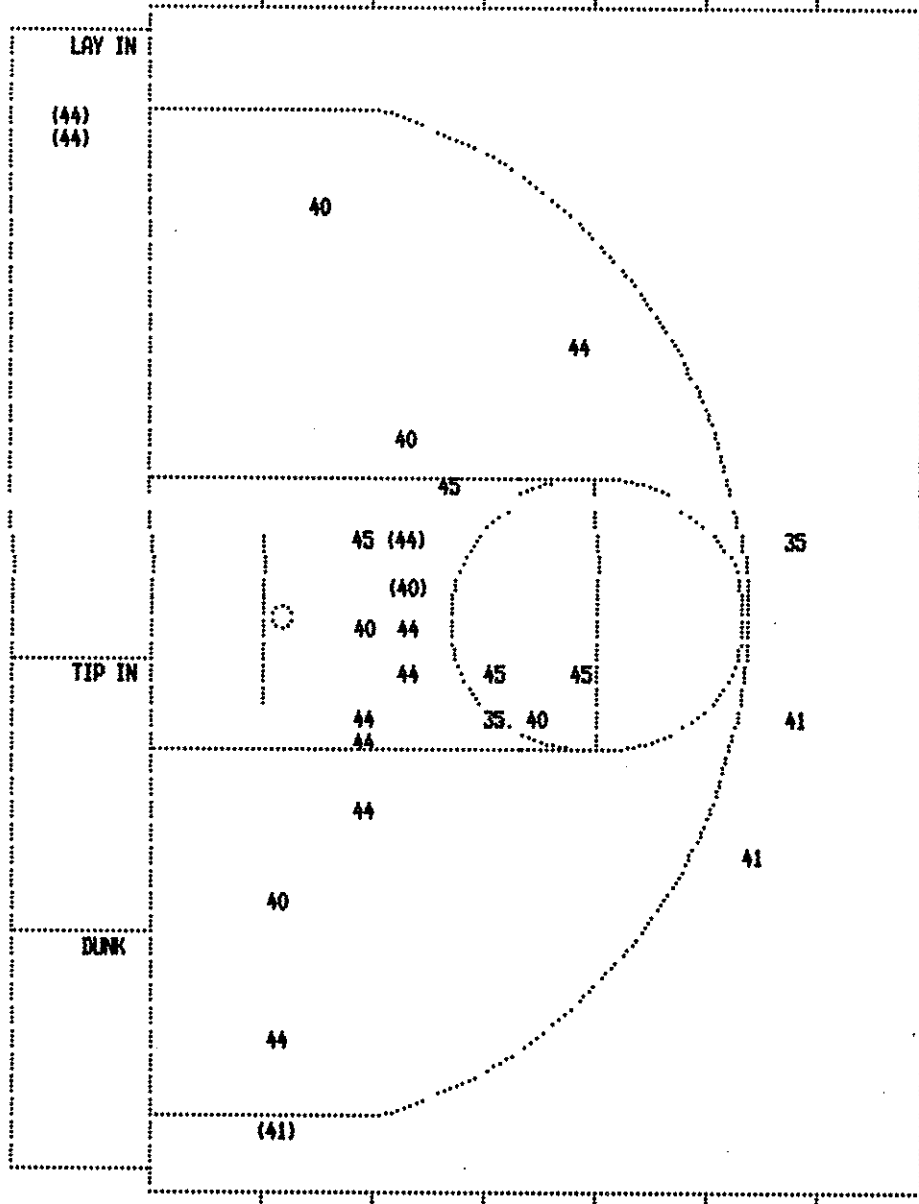
George Rogers Clark "Lady Cardinals" vs West Carter "Lady Comets"
1st Half Play by Play

PAGE : 1

Tip off at 9:00 p.m. on 03/24/88 at State Tourney, Frankfort
Produced by the K.H.S.A.A. Stat Crew with FINAL III**

Player	Team	West Carter	Time	Score	George Rogers Clark	Player	Team
English, Brenda, Taylor, Gina		Porter, Sheila, Greenhill, Mel., Brown, Kim			Guisenberry, K., Wells, Tracy, Berryman, Jen., Phillips, Jessie, Cline, Shannon		
		Ball to Lady Comets					
1	1	Foul on Taylor, Gina	1 7:36	0-2*	12 ft Lane Jump shot by Berryman, Jen.	1-1	100% 1-1 100%
					Assist by Wells, Tracy	1	1
			1 6:52	0-4*	8 ft Left Base Line Turnaround by Berryman, Jen.	2-2	100% 2-2 100%
					Assist by Cline, Shannon	1	2
			1 6:20		Sub In: Oliver, Heather Out: Cline, Shannon		
			1 6:20	0-6*	Berryman, Jen., 2 Free Throws made both	2-2	100% 2-2 100%
			1 5:47	0-8*	4 ft Lane Turnaround by Berryman, Jen.	3-3	100% 3-3 100%
					Assist by Oliver, Heather	1	3
			1 5:20	0-10*	7 ft Lane Bank by Berryman, Jen.	4-4	100% 4-4 100%
					Assist by Oliver, Heather	2	4
1-4	25.0%	1-5 20.0%	Driving Layup by English, Brenda	1 4:37	*2-10	1-1	100% 5-5 100%
				1 4:17	2-12* Turnaround Layup by Oliver, Heather	2	5
					Assist by Wells, Tracy		
				1 3:43	2-14* 12 ft Left Base Line Jump shot by Berryman, Jen.	5-5	100% 6-6 100%
		REB: 0 A: 0 BLK: 0 TO: 2 PF: 1	1 3:35		Sub In: Robinson, Lea Out: Wells, Tracy		
		S: 0 FT: 0-0 00.0% FG: 1-6 16.6%	No. 1 West Carter	TIME - OUT	REB: 5 A: 5 BLK: 0 TO: 1 PF: 0		
					S: 1 FT: 2-2 100% FG: 6-6 100%		
1-2	50.0%	2-8 25.0%	4 ft Lane Jump shot by Porter, Sheila	1 3:14	*4-14		
1		1	Assist by Greenhill, Mel.				
1-1	100%	1-1 100%	Porter, Sheila, 1 Free Throw made	1 3:14	Foul on Berryman, Jen.	1	1
				1 3:14	*5-14		
2-2	100%	3-3 100%	Brown, Kim, 2 Free Throws made both	1 2:45	Foul on Guisenberry, K.	1	2
				1 2:45	*7-14		
				1 1:11	7-16* 4 ft Lane Bank by Berryman, Jen.	6-7	85.7% 7-11 63.6%
				1 0:38	Foul on Berryman, Jen.	2	3
				1 0:38	Sub In: Thomas, Maisha Out: Phillips, Jessie		
				1 0:38	Sub In: Wells, Tracy Out: Berryman, Jen.		
2-3	66.6%	4-5 80.0%	Porter, Sheila, 2 Free Throws missed 1st made 2nd	1 0:38	*8-16		
				1 0:26	Foul on Thomas, Maisha	1	4

FIRST HALF SHOT CHART Produced by the K.H.S.A.A. Stat Crew with FINAL III™



West Carter				Player			
44 - English, B	3/10	30.0%					
45 - Taylor, Gi	0/4	0.0%					
40 - Porter, Sh	1/6	16.6%					
35 - Greenhill,	0/2	0.0%					
41 - Brown, Kim	1/3	33.3%					
Layups	1-9 Ft	10-15 Ft	Over 15 Ft	3 Pointers	Total		
2/2	2/13	0/3	0/3	1/4	5/25		
100.0%	15.4%	0.0%	0.0%	25.0%	20.0%		

George Rogers Clark						Player					
23 - Guisenberr	0/2	0.0%				42 - Oliver, He	1/2	50.0%			
24 - Berryman,	8/9	88.8%									
11 - Phillips, J	1/2	50.0%									
34 - Cline, Sha	2/4	50.0%									
30 - Robinson,	3/5	60.0%									
Layups	1-9 Ft	10-15 Ft	Over 15 Ft	3 Pointers	Total						
3/5	7/10	4/6	0/1	1/2	15/24						
60.0%	70.0%	66.7%	0.0%	50.0%	62.5%						